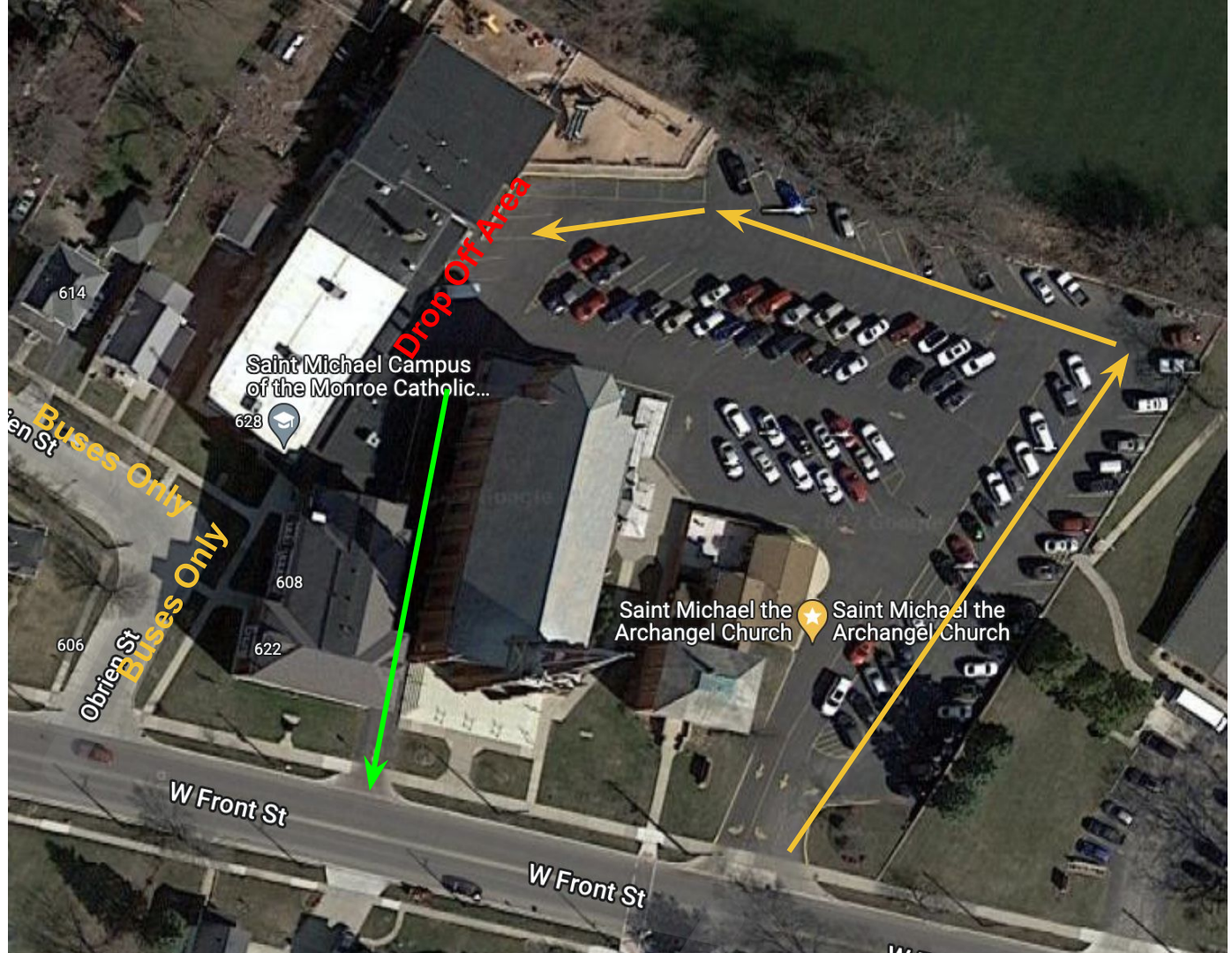


## St. Michael Campus Arrival Procedure

- Prior to arriving, practice un-buckling and getting out of the car independently.
- Stay in your car.**
- Pull forward to allow multiple cars to unload at once.



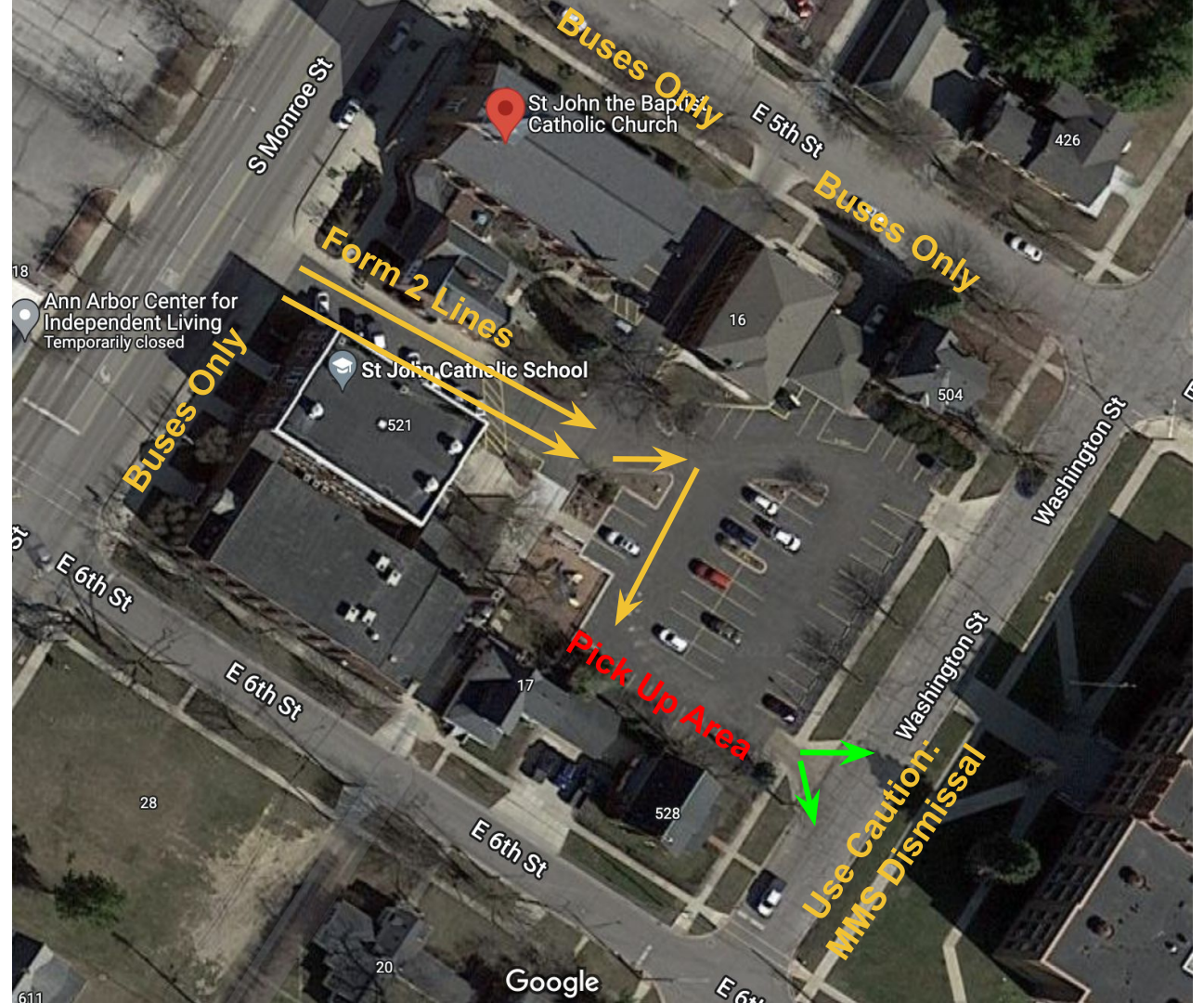
## St. Michael Campus Dismissal Procedure

- Stay in your car.
- Remain in 2 lines **until you reach the playground fence.**
- Listen for your number and **pull all the way** to that number before stopping.
- Exit the pick-up area quickly to keep traffic moving. Pull forward to buckle and get situated.
- Do not block traffic on Front Street



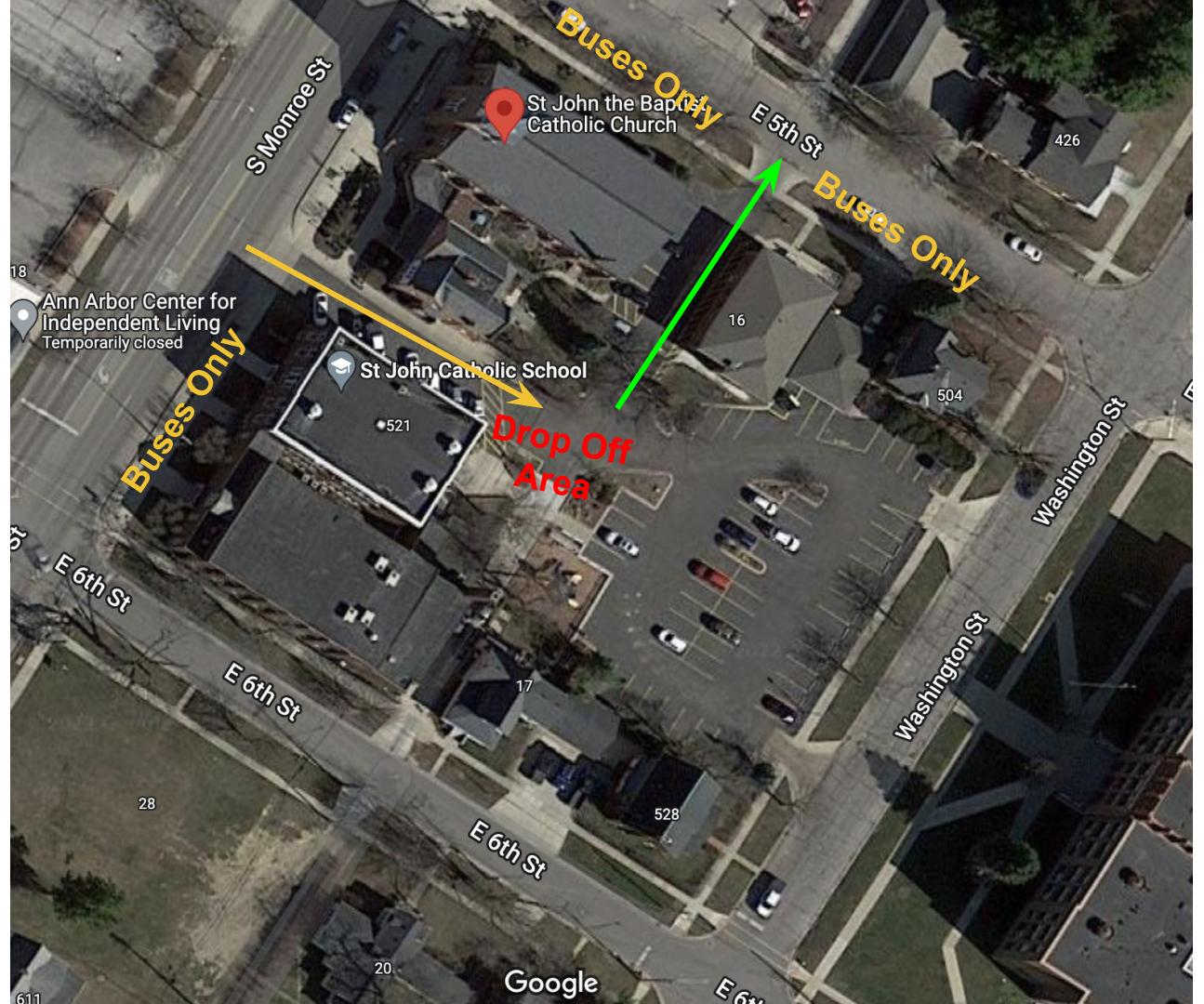
## St. John Campus Dismissal Procedure

- Stay in your car.
- Remain in 2 lines **until you reach the playground fence.**
- Do not block traffic on Monroe Street.



## St. John Campus Arrival Procedure

- Stay in your car.
- Drop off quickly.
- Do not block traffic on Monroe Street.



## St. Mary Campus Arrival Procedure

- Stay in your car.
- Do not block traffic on Willow Street or the Driveway.
- DO NOT PARK/DROP OFF in Parish Life Center Parking Lot. This is Parish-Only Parking.**



## St. Mary Campus Dismissal Procedure

- Stay in your car.
- Do not block traffic on Willow Street or the Driveway.
- Use caution as students walk between rows of cars.
- DO NOT PARK in Parish Life Center Parking Lot. This is Parish-Only Parking.**

